

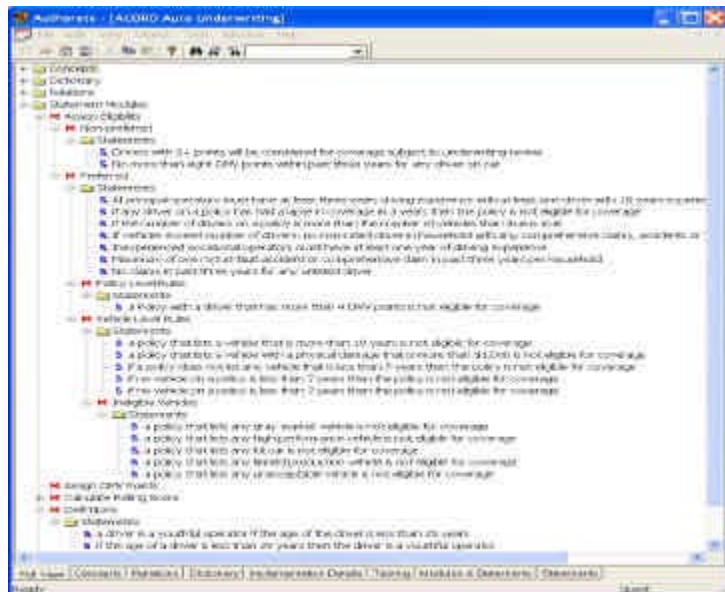
Product Updates

Business Applications

Haley Systems, Inc.
info@haley.com
www.haley.com

HaleyAuthority 5.0 for .NET and Java Applications

Haley Systems, Inc. announces the release of HaleyAuthority 5.0, a business rules management tool for both .NET and Java environments. HaleyAuthority allows business and IT users to develop applications collaboratively while reducing the steps required to change rules when business conditions change. HaleyAuthority 5.0 offers natural language authoring and automatic code generation for .NET and Java applications, along with a patent-pending rules methodology. It offers multiple modes of rules authoring functionality which includes true English text, cascading menus, and table formats. HaleyAuthority 5.0 eliminates the need to translate business requirements from English into complex if-then logic and allows both business and IT users to manage business policies, procedures, regulations, constraints, etc. in an intuitive user interface.



dtSearch[®]

Instantly Search Gigabytes of Text Across a PC, Network, Intranet or Internet Site

Publish Large Document Collections to the Web or to CD/DVD

- ◆ over two dozen indexed, unindexed, fielded & full-text search options
- ◆ highlights hits in HTML, XML, & PDF while displaying embedded links, formatting & images
- ◆ converts other file types (word processor, database, spreadsheet, email, ZIP, Unicode, etc.) to HTML for display with highlighted hits

"The most powerful document search tool on the market"
—Wired Magazine

"Intuitive and austere ... a superb search tool" *—PC World*

"Blindingly fast" *—Computer Forensics: Incident Response Essentials*

"A powerful arsenal of search tools" *—The New York Times*

dtSearch "covers all data sources ... powerful Web-based engines" *—eWEEK*

"Searches at blazing speeds" *—Computer Reseller News Test Center*

In the past two years, over half of the Fortune 15 purchased dtSearch developer or network licenses.

1-800-IT-FINDS See www.dtsearch.com for:

sales@dtsearch.com

- ◆ hundreds of developer case studies & reviews
- ◆ fully-functional evaluations

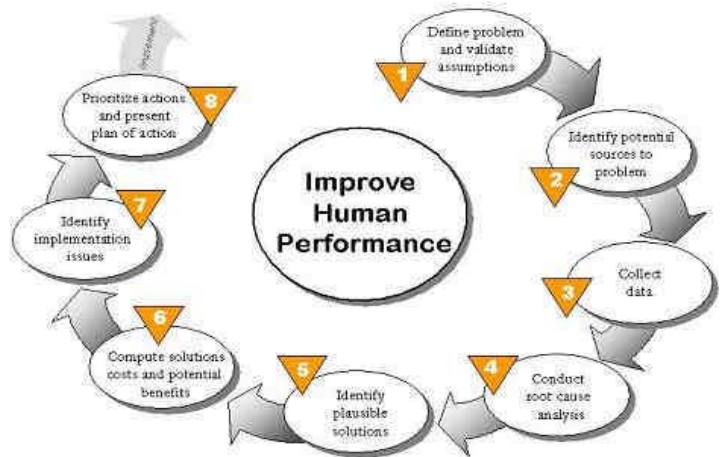
The Smart Choice for Text Retrieval[®] since 1991

Data Mining and Modeling

Automated Data Mining Model Development and Validation Software

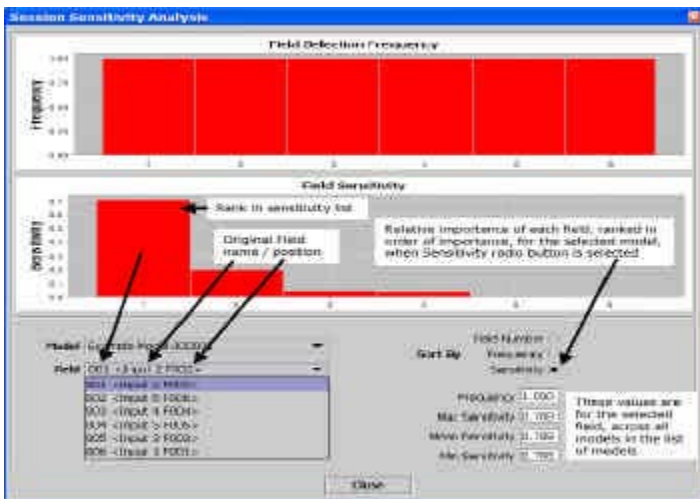
NeuralWare announces the release of the NeuralSight data mining model development/validation software. NeuralSight augments and enhances the NeuralWorks Predict® platform, which enables researchers and analysts to create neural network models for prediction, classification, and clustering applications. NeuralSight extends the features of Predict by providing a Graphical User Interface for handling large datasets and by allowing modelers to specify model performance requirements. NeuralSight selects and ranks the best neural networks from a set of networks built by Predict during an unattended model building session. NeuralSight is available now for Microsoft Windows® 2000 and Windows XP. Other operating systems will be supported in 2005.

NeuralWare
info@neuralware.com
www.neuralware.com



most cost-effective way to deliver the training. Module 4 is "Manage Training Budgets and Resources." This module determines how much money must be allocated to provide the most benefits. For more information on ADVISOR Enterprise, visit the BNH website.

BNH Expert Software
bahlis@bnhexpertssoft.com
www.bnhexpertssoft.com



Decision Support

ADVISOR Enterprise 6.1

BNH Expert Software announces the release of ADVISOR Enterprise v. 6.1. ADVISOR Enterprise is a decision support tool that helps organizations manage training budgets and resources and identify methods of running programs more efficiently. ADVISOR contains four modules: Module 1 is "Align Training with Organizational Goals". This is a needs assessment tool for analyzing goals and identifying what is needed to achieve those goals. Module 2 is "Improve Human Performance." This is a decision support tool that analyzes deficiencies in performance and recommends training and solutions. Module 3 is "Select the Right Blend of Delivery Options." This module analyzes the effectiveness of training courses and then determines the

INFERENCE WITHOUT THE ENGINE!!

EZ-Xpert 3.0 eliminates the inference engine, so you get rule-based solutions with:
WARP SPEED – test over 20,000 rules per second on a PC while using less memory.

EZ, Fast Development – the expert can create 100s of rules a day without assistance.

Xpert Precision - all applications meet 23 verification criteria, ensuring the highest accuracy.

Free Distribution - no royalties, *no inference engine to buy, learn, support, or implement.*

You Write NO CODE! – EZ-Xpert generates complete systems in *C++ and VisualBasic!*

EZ-Xpert 3.0

Let us port your expert systems into C++!

AI Developers, Inc.

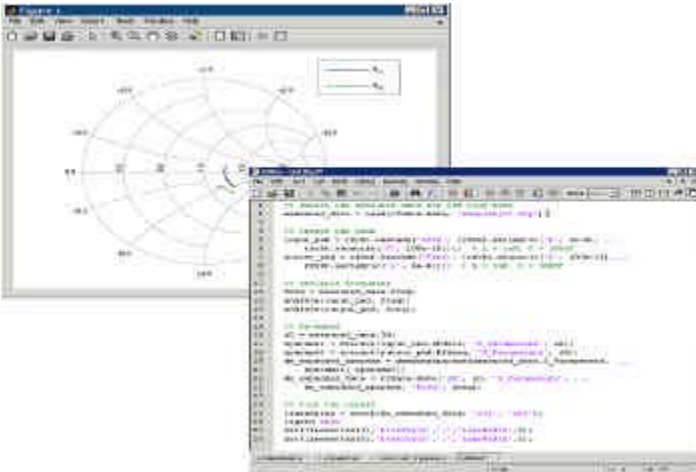
info@ez-xpert.com (888) 327-9397

www.ez-xpert.com

Intelligent Search Tools

New Version of DocuLex Desktop Search

DocuLex and dtSearch announce the release of Version 6.3 of DocuLex Desktop Search. The resulting product joins DocuLex's document capture technology with dtSearch's text searching technology. Desktop Search works with DocuLex's multiple OCR and other imaging products, including DocuLex's Professional Capture and Office Capture as well as Goby Capture. The integrated product works to index and search the full text of imaged documents. For example, after DocuLex OCRs a collection of documents



into PDF "image with hidden text" format, Desktop Search can then index and search that collection, highlighting hits on the scanned image. Desktop Search can also combine a search of imaged files with other PDF, HTML, XML, email (including attachments), word processor, database, spreadsheet, presentation and Unicode files. The product displays all retrieved files in a browser with highlighted hits, while keeping embedded XML, PDF and HTML formatting, links and images intact.

Doculex, Inc.
sales@doculex.com
www.doculex.com

dtSearch Corp.
sales@dtsearch.com
www.dtsearch.com

Intelligent Tools

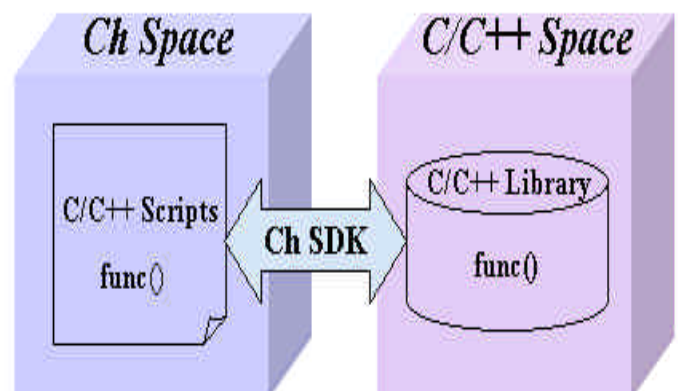
MATLAB RF Toolbox 1.0.1



The MathWorks announces version 1.0.1 of their Radio Frequency (RF) Toolbox. The toolbox extends the MATLAB technical computing environment with functions and a graphical user interface for working with, analyzing, and visualizing the behavior of RF components. The toolbox allows the user to specify RF filters, transmission lines, amplifiers, and mixers by their network parameters and physical properties. The user can also read and write industry-standard file formats for network parameters. RF Toolbox functions are executed from the MATLAB command line or the RF Tool GUI, or can be called with individual MATLAB scripts and functions. The toolbox includes rectangular and polar plots and Smith® charts for visualizing data.

The MathWorks, Inc.
www.mathworks.com

MPI-XF Support for AMD Opteron™ Processors

Engineered Intelligence (EI) announces the release of MPI-XF version 1.2, a high performance solution for the industry standard Message Passing Interface (MPI), and announced validation for




+


<p>With Eclipse:</p> <ul style="list-style-type: none"> World class, multi-platform, extensible development environment Source code debugging for Prolog logicbases running in other programs and on remote (Web) servers Code outlines and project cross references Team development tools <p>You Can:</p> <ul style="list-style-type: none"> Automate the logical rules and relationships that run an organization Develop integrated logic base components Use professional development tools and methodologies Customize knowledge representation and reasoning engines for individual application needs Apply advanced ontology concepts and develop semantic web applications 	<p>With Amzi!:</p> <ul style="list-style-type: none"> World class, multi-platform, extensible Logic Programming tools ISO Standard High performance for 24/7 server deployment Large logicbase support Integrates seamlessly with Java/JSP, .NET, C#, VB, C++, Delphi and more
--	--

Download

www.amzi.com